

CONSERVATION QUARTERLY

FALL 2015

LANDOWNER SPOTLIGHT: GRINNIN' MEADOWS

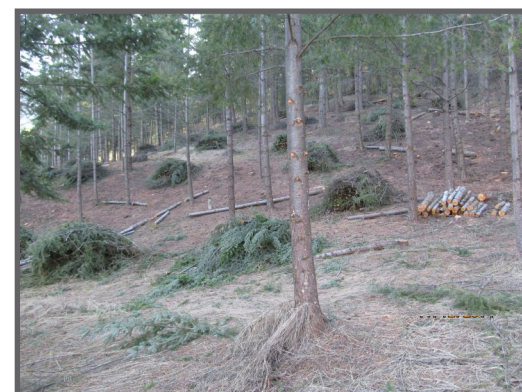


Grinnin' Meadows before treatment

Sara Rolfs, owner of Grinnin' Meadows near Squilchuck State Park, recently worked with Cascadia Conservation District (Cascadia) and the Natural Resources Conservation Service (NRCS) to treat 27 acres of her forested land. Prior to this work, Rolfs' forest was overstocked and posed a significant wildfire hazard as well as being poor wildlife habitat with an increased risk of pest and disease. Through the Cascadia and NRCS cost-share programs Rolfs was able to significantly improve the health of her forest land.

Rolfs had the following to say about her experience with this effort:

"I became aware of Cascadia Conservation District's cost-share program through their education outreach staff who presented at our Forest Ridge Wildfire Coalition board meeting. I subsequently inquired about the cost share program to see if my project would qualify. Cascadia staff were very helpful and walked me through the process of applying. The project had some challenges due to the difficulty of the terrain and amount of fuels, which led to cost-overruns. Cascadia staff helped mitigate the situation and we completed the project in November 2014.



Grinnin' Meadows after treatment



After 12 years of slowly working on improving the forest stand on our property, I finally have a sense of security regarding the potential of catastrophic wildfire endangering our home. I am also pleased to be doing our part to create a healthier environment for local vegetation and wildlife. We are finally reaching our goal of being good stewards of our land.

I whole-heartedly recommend Cascadia Conservation District to my friends and neighbors as they are a tremendous help in ensuring proper management of natural resources in a responsible and proactive manner." - Sara M. Rolfs, Grinnin' Meadows

Need help managing natural resources on your property? Cascadia is here to help!

Cascadia's Landowner Assistance Program offers technical and financial assistance and can pay up to 75% of the total cost of eligible projects. Eligible projects include: fuels reduction, irrigation system upgrades, and more. Please contact us for details!

Cascadia is currently seeking cooperators for streamside planting projects in the Wenatchee River basin as well as offering FREE soil testing to qualified landowners!

For additional information, please contact Sandy Letzing at: (509) 436-1601 or sandyl@cascadiacd.org

POSTAL CUSTOMER

Non-Profit Org.
US POSTAGE
PAID
PERMIT # 40
Wenatchee, WA
ECRWSS

2016 NATIVE PLANT SALE



See page 3 for more information and an order form.

FIREWISE: THE ZONE CONCEPT

Fall is a great time to implement Firewise practices! This fall, focus on *The Zone Concept* to better protect your home from wildfire damage. The following information is adapted from the Firewise.org website.

The primary goal for Firewise landscaping is fuel reduction — limiting the amount of flammable vegetation and materials surrounding the home and increasing the moisture content of remaining vegetation. The home itself and everything around it up to 100 – 200 feet is known as the ‘home ignition zone.’ Within this 200 foot area, there are three zones:

Zone 1 encircles the structure and all its attachments (wooden decks, fences, and boardwalks) for at least 30 feet on all sides. *Note:* the 30-foot number comes from the minimum distance, on flat ground, that a wood wall can be separated from the radiant heat of large flames without igniting. In this area:

- Prune trees up six to ten feet from the ground. Space trees 30 feet between crowns. Trim back trees that overhang the house.
- Remove dead vegetation, firewood stacks, and propane tanks from under deck and within 10 feet of house.

Zone 2 is 30 to 100 feet from the home. Plants in this zone should be low-growing, well irrigated and less flammable. In this area:

- Leave 30 feet between clusters of two to three trees, or 20 feet between individual trees and prune trees up six to ten feet from the ground. Create ‘fuel breaks’, like driveways, gravel walkways and lawns.

Zone 3 is 100 to 200 feet from the home. This area should be thinned, although less space is required than in Zone 2. **NOTE:** Because of other factors such as topography, the recommended distances to mitigate for radiant heat exposure actually extend between 100 to 200 feet from the home – on a site-specific basis. In this area:

- Remove smaller conifers that are growing between taller trees. Remove heavy accumulation of woody debris. Reduce the density of tall trees so canopies are not touching.

For additional information and resources visit: <http://www.firewise.org/wildfire-preparedness/be-firewise/home-and-landscape/defensible-space.aspx?sso=0>

Cascadia is currently offering FREE wildfire risk assessments for forest landowners. Please contact Amanda Levesque at amandal@cascadiacd.org or (509) 436-1601 to sign up!



WELCOME ABOARD!

AmeriCorps Member McKenzie Selden graduated from Western Washington University with a degree in Environmental Policy and a minor in Communication Studies. After spending a semester studying Sustainable Development in Costa Rica, she spent the winter working at Mission Ridge and the summer with the Forest Service. McKenzie is really excited to be combining her educational experience with her love of the Wenatchee Valley as the new AmeriCorps intern. A local Wenatchee-ite, McKenzie enjoys spending her free time skiing and backpacking in the North Central Cascades.

PHOTO CONTEST RESULTS

Thank you to all the wonderful photographers who made our 2015 photo contest another big success, and congratulations to the photographers of the twelve winning photos!

The twelve winning photos, two per each of the six categories, are listed to the right. Please visit our Facebook page (link at www.cascadiacd.org) to see them all. Look for a selection of them in an upcoming *Wenatchee World* article. Also, three “Best in Show” photos will be featured in the December issue of *The Good Life* magazine, out in mid-November.

Thank you to our photo galleries for displaying the entries: 59er Diner, Bella Bistro, Der Man Shoppe, Leavenworth Mountain Sports, Lemongrass Natural Foods, and Mountain Springs Lodge.

The 2016 Chelan County Clean Water Campaign stewardship calendar featuring the winning photos will be out in mid-November. Contact Cascadia Conservation District at (509) 436-1601 or cascadiacd@yahoo.com for additional

information and to order yours!

Agriculture:

“Grapes on Arbor” by Alan Moen
“Wheat” by Airan Mendoza

Landscape:

“Moonset at Saddlerock” by Robert DeTorres
“Buck Creek Watershed” by Brad Brisbane

Plants:

“Sunlight Through the Leaf” by Dale Blair
“Sunny” by Emily March

Recreation:

“Hop Skip and a Jump” by Brendan Morrison
“Rowing on the River” by Robert DeTorres

Water:

“Over and Under Icicle Creek” by Dale Blair
“Old Roaring Creek Bridge” by Alan Moen

Wildlife:

“Running Into Wildlife” by Airan Mendoza
“Rufous Hummingbird Taking Nectar from Bull Thistle” by Conor O’Leary

*A big thank you to the
Community Foundation of North
Central Washington, the U.S.
Bureau of Reclamation, and
other local sponsors
for supporting this effort!*

WE NEED YOU...

...TO JOIN OUR BOARD OF SUPERVISORS...

Cascadia Conservation District is self-governed by a Board of Supervisors who work to establish priorities, set policy and direct the work of Cascadia staff. Registered voters residing within the Cascadia Conservation District boundary* who are interested in guiding conservation efforts in Chelan County are encouraged to run for office. Board members are unpaid volunteers who serve a three-year term and must be available to attend monthly meetings.

To announce your candidacy:

1. Obtain an information form and nominating petition by calling our office: (509) 436-1601 or visiting our website: www.cascadiacd.org.
2. Collect signatures from at least 25 registered voters in the District.
3. Submit completed information form by **December 17, 2015**. Include the nominating petition to get your name printed on the ballot.

*The Cascadia Conservation District boundary currently includes all of Chelan County except for the incorporated cities of Wenatchee and Chelan.

...AND TO VOTE !

If you don’t have the time to serve on the Board, then make your voice heard by voting for your preferred candidate.

Registered voters within the District boundary are eligible to vote. The election will likely be held during the annual Pear Day conference on **January 19, 2016** in the lobby of the Wenatchee Convention Center from 8:30 am to 2 pm.

Watch our website for official dates and announcements. Please call Valerie at (509) 436-1601 with election questions.





ANNUAL NATIVE PLANT SALE

Cascadia Conservation District is now accepting orders for our annual native plant sale. This year we will be offering 11 different plant species suitable for a variety of planting projects. Many of the plants are also considered fire-resistant and make excellent choices for your FireWise landscape.

Most of the plants are available as bare-root stock, meaning they do not come in pots or burlap bags. They are harvested from the field in winter when the plants are dormant and arrive ready to be replanted in your landscape.

Most plants are sold in bundles of 5 stems with the exception of Ponderosa pine, which are offered in either bundles of 25 stems or bags of 200 stems. An order form is included below.

A color brochure with photos and information on each of the plant species offered is available on our website at www.cascadiacd.org or by calling our office at (509) 436-1601. **All orders must be received by March 4, 2016.**

Plants are sold on a first-come, first-served basis and quantities are limited. A minimum 50% deposit is required to hold your order. Fully

prepaid orders are appreciated. We are sorry, but we are unable to accept credit cards at this time.

Plants will be distributed at the Stemilt Growers Warehouse in north Wenatchee in April 2016. A map to the pick-up site will be sent to you along with a reminder as the pick-up date approaches. Please be aware that any unclaimed plants will be considered abandoned and used for conservation projects. There are *no* refunds for plant orders not picked up. If you can't make the pick up day and time you can designate someone else to pick up your plants for you.

Please refer to our website, www.cascadiacd.org, for a list of commonly asked questions related to the plant sale. Inquiries should be directed to McKenzie Selden, AmeriCorps Member, at (509) 436-1601 or americorps@cascadiacd.org.

In addition to the plant sale, Cascadia Conservation District is sponsoring a free workshop titled **"Native Planting 101"**. This workshop will cover a wide variety of topics including restoration, yardscaping and creating pollinator habitat with native plants, as well as everything you ever wanted to know about weed identification and management.

The "Native Planting 101" workshop will be held on **March 5, 2016.**

For more information or to RSVP contact AmeriCorps Member, McKenzie Selden, at (509) 436-1601 or visit our website at www.cascadiacd.org.

STOCK TYPES

1-0 Bareroot– Grown in seedbed for one year. They represent the smallest stock type and are easiest to plant correctly, but plan for some weed control.

2-0 Bareroot– Grown two years in seedbed. They are bigger and better able to compete with surrounding vegetation and can withstand light to moderate browsing by wildlife.

Plug– Container grown in a greenhouse for one year. Roots still encapsulated in soil. Similar to 1-0 stock in terms of planting ease, competition with surrounding vegetation, and susceptibility to browsing by wildlife.



Cascadia Conservation District 2016 Native Plant Sale

Name: _____

Mailing Address: _____

City: _____ State: _____ Zip Code: _____

Phone Number: _____

Email Address: _____

Plant	Stock	Height	Sold As	# of Bundles	Price/Bundle	Order
Conifers:						
Ponderosa Pine	2-0	12"+	200 per bag	_____	x \$120.00 each	= _____
Ponderosa Pine	2-0	12"+	25 per bundle	_____	x \$30.00 each	= _____
Deciduous Trees:						
Quaking Aspen	1-0	12"+	5 per bundle	_____	x \$7.50 each	= _____
Vine Maple	2-0	18"+	5 per bundle	_____	x \$7.50 each	= _____
Shrubs:						
Blue Elderberry	1-0	12"+	5 per bundle	_____	x \$7.50 each	= _____
Golden Currant	1-0	12"+	5 per bundle	_____	x \$7.50 each	= _____
Mock Orange	2-0	12"+	5 per bundle	_____	x \$7.50 each	= _____
Red Osier Dogwood	1-0	12"+	5 per bundle	_____	x \$7.50 each	= _____
Serviceberry	1-0	12"+	5 per bundle	_____	x \$7.50 each	= _____
Woods Rose	1-0	12"+	5 per bundle	_____	x \$7.50 each	= _____
Black Huckleberry	plug	3-6"	5 per bundle	_____	x \$20.00 each	= _____
Ground Cover:						
Kinnikinnick	plug	3-6"	5 per bundle	_____	x \$15.00 each	= _____

Minimum 50% deposit is required to guarantee order.

We do not accept credit cards at this time.
Sorry for any inconvenience.

Add 8.2% WA State Sales Tax = _____

Total = _____

For office use only: receipt # _____ paid _____ outstanding balance _____

Ordering Instructions

1. **Complete order form.**
2. **By March 4th, please bring or mail your order form with payment to:**

Cascadia Conservation District
14 N Mission St.
Wenatchee, WA 98801

3. **Pick up your plants on:**

April 16th, 10AM - 1PM

Plant distribution will take place at the Stemilt Growers Warehouse in north Wenatchee.

Receipt and map will be sent via mail, or email if requested.

Questions?
509-436-1601

Thanks for supporting your local conservation district!

FIRE RECOVERY ASSISTANCE

Contributed by Sarah Troutman-Zahn of the Natural Resources Conservation Service

Wildfires can trigger dramatic increases in runoff and erosion. Burn severity contributes not only by removing above ground vegetation and litter, which aids in capturing precipitation as well as increasing infiltration, but can also create a water-repellent layer at the soil surface which restricts infiltration altogether. When rain does fall, it actually seals the surface resulting in drastic overland flows as well as sediment and debris transport. Runoff and flash flooding type conditions can begin within 5 minutes. To further exacerbate this problem, once runoff does begin, the ash content has been shown to increase the fluid density. This increased density means that a runoff event can quickly become capable of transporting boulders, trees and even vehicles. This risk is most prevalent in the first two years after a fire.

What you can do:

- Contact your insurance agent about the National Flood Insurance Program
- Understand the risks up-stream from you, even if you are not in a burned area
- Monitor the weather closely or carry a NOAA weather radio to get the most up to date reports
- Have emergency supplies that will last you and your family at least 3 days
- Never drive or walk through areas that are flooding
- If you find yourself amidst a flash flood, move to higher ground!

Our native landscapes do not change overnight. It is a very slow ecological process. However, it is a landscape adapted to wildfire. Before jumping in to try and restore what you had before the fire, it would be wise to contact a natural resources professional. Some plant species that were present before a fire may not be seen again during your lifetime. Some native grasses will flourish in the next 2-5 years. Attempting to rehabilitate a site like this could do more harm than good by introducing undesirable species and creating competition with native species that already have a seedbank established on your site. The primary areas that a person should focus re-seeding efforts are firelines and areas that were previously infested with weeds. Rehabilitation in a forested setting can become even more complex. Salvage logging has both benefits and, lately, many concerns. It can lead to increased compaction and erosion on a site but alternatively, can increase surface cover on an already bare site. A landowner should carefully consider their objectives before doing salvage logging, and if done, prepare to take measures to control erosion after machinery has been on site.

Local, state and federal agencies continue to seek funding to assist private landowners with erosion control, wildfire rehabilitation and recovery. The Natural Resources Conservation Service has requested funding and will announce a sign-up for agricultural producers and non-industrial private forest landowners should funds become available. In the past, wildfire recovery funding has been made available for livestock producers willing to rest private lands from grazing for 2 years, replacement of cross-fencing, slash treatment of woody debris following a wildfire, and reforestation. We encourage individuals who may qualify for these funds to contact the Cascadia Conservation District at (509) 436-1601 or www.cascadiacd.org, our Wenatchee field office at (509) 662-1141 ext 3, or the Okanogan field office at (509) 422-2750 ext. 3.



CASCADIA
CONSERVATION DISTRICT

14 N Mission St Wenatchee, WA 98801
(509) 436-1601 • www.cascadiacd.org

Board of Supervisors

Josh Koempel, *Chair*
Hal Hawley, *Vice Chair*
Roger Wristen, *Auditor*
Jim Bartelme, *Member*
Junell Wentz, *Member*
Larry Cordes, *Associate*
Conard Petersen, *Associate*

Staff Members

Mark Amara, *Archaeologist*
Mike Cushman, *Project Coordinator II*
Peggy Entzel, *District Administrator*
Patrick Haggerty, *Project Coordinator II*
Valerie Hampton, *Administrative Assistant*
Kim Lancaster, *Archaeologist*
Sandy Letzing, *Resource Specialist*
Amanda Levesque, *Education & Outreach*
Michael Rickel, *Program Manager*
McKenzie Selden, *AmeriCorps Member*
Jason Sims, *Resource Specialist II*
Nada Wentz, *Office Assistant*

This newsletter is funded in part by grants from the Washington State Conservation Commission, the Washington State Department of Ecology and other public and private granting entities.



Please Remember to Recycle

Cascadia Conservation District has a blog:
Please check it out at:
<http://ccdconservationconversation.blogspot.com/>

UPCOMING MEETINGS & EVENTS

CCD Regular Board Meetings

-November 19, 2015 3:30-5:00 pm at 14 N Mission St, Wenatchee
-December 17, 2015 3:30-5:00 pm at 14 N Mission St, Wenatchee

Entiat Habitat Sub Committee Meetings

-November 19, 2015 9:00 am-12:00 pm at the Entiat Fire Station
-December 17, 2015 9am-12pm at the Entiat Fire Station

Entiat Watershed Planning Unit Meetings

-January 6, 2016 9:00 am at the Entiat Grange Hall

Wenatchee River Institute- Living with Wildfires Speaker Series

-November 5-30, 2015 5:30-8:00 pm Mondays at Milepost 111

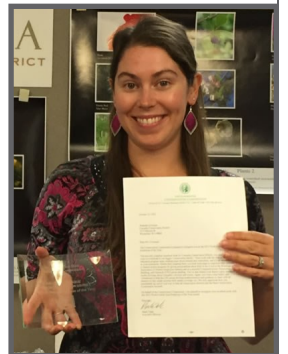
Wildfires & Us Summit

-November 9, 2015 4:00-6:00 pm at the Numerica Performing Arts Ctr

The Initiative for Rural Innovation & Stewardship (IRIS) 6th annual NCW Community Success Summit in Waterville

-November 12, 2015 9:00 am - 3:00 pm at the NCW Fairgrounds

Congratulations to Amanda Levesque, the 2015 North Central Area Employee of the Year. Amanda was recognized for her excellence in education, communication and assistance to other districts in developing their media resources and abilities. We really appreciate her skill, organization and commitment to quality publications and outstanding outreach. Thank you, Amanda!



Yakama Nation (YN) Entiat Projects Update

Provided by Christopher Clemons and Matt Wilberding

The YN has teamed up with the US Forest Service (FS) to construct two Habitat Enhancement Projects in the Upper Stillwaters reach location. The project areas are Signal Peak and Upper Burns, located at RM 27.5-25.2 respectively, all on FS lands, with implementation slated for 2016. The goal of these two projects is to increase instream complexity and diversity as well as provide connection to peripheral and transitional habitats through this reach. For more information please contact YN project manager Christopher Clemons at 509-881-5746.

The YN has also teamed up with the Bureau of Reclamation (BOR) and Bonneville Power Administration (BPA) to enhance the Entiat River. Construction is expected in the summer of 2017. The project, known as "Stormy A", is located from RM 20.1-20.7 and consists of installing ~30 wood structures and enhancing 1 side channel. For additional information please contact YN project manager Matt Wilberding at 509-881-7091.

Thank you to our three new funding sources for keeping important outreach projects and programs in operation!



Newsletter sponsored in part by:

Native Plants of Central Washington
for
Restoration and Landscaping

- Over 120 species, including trees, shrubs, wildflowers and grasses
- Nursery is open March–November

Derby Canyon Natives