

# CONSERVATION QUARTERLY

SUMMER 2014

## WENATCHEE RIVER CLEANUP - BE PART OF THE SOLUTION!



Volunteers remove debris from the banks of the Wenatchee River



Debris removed from the Wenatchee River during a previous Cleanup event

Cascadia Conservation District, the Chelan County Natural Resources Department, and the Cashmere Lions Club will co-host a fun filled day on the Wenatchee River in August!



Join us Saturday, August 9 from 9 a.m. to noon for a debris cleanup from the banks of the Wenatchee River at two locations:  
**Cashmere Riverfront Park and East Leavenworth Road Boat Launch.**

The morning's work will be followed by a volunteer appreciation party beginning at noon at **Cashmere Riverfront Park.**

The party will include a free barbeque, live music, and family oriented games and activities! Representatives from several local natural resource agencies as well as from the local recreation community will host informational tables during the party.

To RSVP for this fun-filled family event or for additional information please visit [www.picturethewenatchee.com](http://www.picturethewenatchee.com) or call (509) 436-1601. We hope to see you there!

If you are interested in floating the river to clean up please contact: Jennifer Goodridge with Chelan County Natural Resources Department at (509) 860-1022 or [jennifer.goodridge@co.chelan.wa.us](mailto:jennifer.goodridge@co.chelan.wa.us), or Amanda Levesque with Cascadia Conservation District at (509) 436-1601 or [amandal@cascadiacd.org](mailto:amandal@cascadiacd.org).



Volunteers load debris from the Wenatchee River into their raft to transport it to the designated pickup location

POSTAL CUSTOMER

Non-Profit Org.  
US  
POSTAGE  
PAID  
PERMIT # 40  
Wenatchee,



## Picture the Wenatchee

a community for clean water & healthy habitat

### To become county-wide stewardship effort!

Picture the Wenatchee is being expanded to include all of Chelan County. Watch for future stewardship campaign information at [www.cascadiacd.org](http://www.cascadiacd.org) and visit Facebook to vote on the new name!

---

## PHOTO CONTEST

This year's photo contest will still be run through [www.picturethewenatchee.com](http://www.picturethewenatchee.com). Please visit the site for complete contest rules & details and to submit your photo(s)!

# WATER QUALITY UPDATE: *FOR THE WENATCHEE RIVER AND TRIBUTARIES*

Rivers, lakes, and streams in the Wenatchee watershed are used by people in many ways such as irrigating residential lawns and agricultural lands, servicing municipal and business needs, and for drinking water and recreational enjoyment. These water bodies are also important spawning and rearing areas for many salmonid species, as well as supporting other wildlife. However, pollution threatens the health of the watershed and jeopardizes its many uses.

## What is a Water Cleanup Plan?

Federal law requires states to identify sources of pollution in waters that fail to meet state water quality standards, and to develop Water Cleanup Plans to address those pollutants. The Water Cleanup Plan, also called a Total Maximum Daily Load (TMDL), establishes limits on pollutants that can be discharged to the water body and still allow state standards to be met. Cascadia Conservation District's Wenatchee Watershed Water Quality Improvement Program works to implement this Water Cleanup Plan or TMDL.

## Which Wenatchee area water bodies need to be cleaned up?

Several sections of rivers and streams in the Wenatchee watershed have been found to exceed state standards for pollution levels. Portions of the Wenatchee River, Mission Creek, Brender Creek, Peshastin Creek, Icicle Creek, Chumstick Creek, Nason Creek, Chiwaukum Creek, and the Little Wenatchee River are all listed water bodies that do not meet standards.

## What are the concerns?

Listed pollutants include pesticides such as DDT, fecal coliform, temperature, dissolved oxygen, and pH. Pollutants such as pesticides and fecal coliform are a human health concern. Pesticides, high water temperature, low dissolved oxygen, and extreme pH levels are dangerous for fish and aquatic life.

## What is the problem?

There are many activities that can contribute to polluting our waterways. Examples include runoff from residences and farms that use nutrients and pesticides; animals that defecate in or near streams; discharge from wastewater treatment plants and fruit processors; erosion or pollution from timber harvesting, development, failing septic systems, and littering or dumping waste near streams.

## What is being done about it?

Cascadia Conservation District is addressing the water quality problem by working with private landowners on ways to improve water quality. One avenue is coordinating river cleanup activities. Local watershed associations, landowners, citizens, businesses, and public officials are engaging in cleanup efforts. *Join us for a community cleanup event August 9 (see front page article for details).* The Wenatchee watershed TMDLs are being coordinated with other water resources and fish recovery efforts.

Cascadia also offers soil testing and associated technical assistance for nutrient planning for citizens with livestock, agricultural land or residential lawns. Irrigation scheduling on residential lawns and agricultural lands will reduce the risk of excessive fertilizer application and overwatering, which, if unchecked, can lead to leaching or runoff into area rivers and streams.

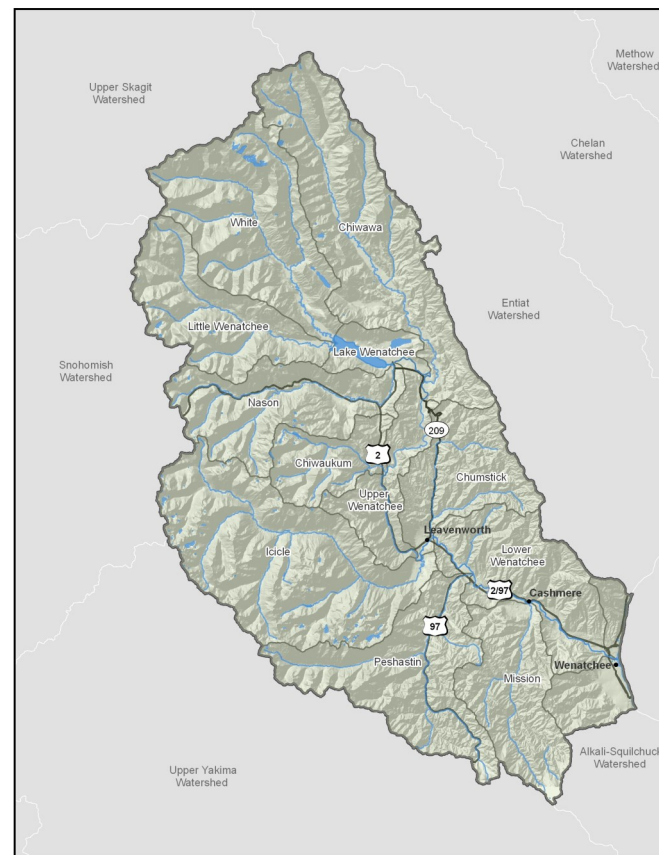
Riparian plantings of native trees and shrubs where streamside riparian conditions are degraded or non-existent can improve water quality. As the plantings mature they will help filter out nutrients, wastes and other potential pollutants from runoff, provide effective shade to cool water temperatures, and contribute root strength to slow erosion. The reduced rates of erosion will help decrease DDT and phosphorous loading and help keep stream temperatures cool. Restored riparian areas will also contribute to improved habitat conditions for threatened and endangered fish species.

Pasture health and riparian livestock exclusion fencing are other Best Management Practices that Cascadia CD can assist landowners with to improve the health of the land as well as improve water quality.

***CASCADIA OFFERS VOLUNTARY PROGRAMS YOU CAN  
BE INVOLVED IN TO ADDRESS THE ABOVE TOPICS!***

## What can I do?

You can help! If you would like to be involved, have a project idea, or would like additional information about improving water quality in the Wenatchee River Watershed, please contact Kristine Desgroseillier, Cascadia Conservation District, at (509) 436-1601 or Kristined@cascadiacd.org



Map of Wenatchee Watershed and its tributaries



## Need help managing natural resources on your property? Cascadia is here to help!

Cascadia's Landowner Assistance Program offers technical and financial assistance and can pay up to 50% of the total cost of eligible projects. Eligible projects include: fuels reduction, irrigation system upgrades, and more.

**Cascadia is currently seeking cooperators for streamside planting projects in the Wenatchee River basin.**

For additional information, please contact Kristine Desgroseillier at: (509) 436-1601 or Kristined@cascadiacd.org



## ENTIAT RESTORATION PROJECTS UNDERWAY

Construction activities are ramping up for the lower Entiat River salmon habitat restoration projects.

With the Mills Canyon fire still active, some delays could be expected, but the current plan is to keep moving forward. With that in mind, the permitted in-water work window is from July 16<sup>th</sup> through the 31<sup>st</sup>, with some projects having a work window extension through September 15<sup>th</sup>.

As described in previous Cascadia newsletters and as presented at the public meeting held in Entiat on

April 29<sup>th</sup>, project elements include: habitat logs and boulder clusters placed along the channel margins, improvements to existing side channel areas, and the creation of a new off channel alcove for high flow refuge for young fish. Also, two engineered log jams will be installed upstream of two side channels to provide fish habitat and help direct flow.

For questions or additional information, please contact Jason Sims, Cascadia's Watershed Coordinator, at (509) 436-1601. Look for a post-construction update in Cascadia's fall newsletter, out in early November.



Habitat log example along the channel margin



Boulder cluster example

## WHAT TO DO BEFORE, DURING, AND AFTER A WILDFIRE:

Every year, wildfires burn in Chelan County, but by working together residents can make their own property and neighborhood safer. Remember, fire season last until late September in our region and rain only slightly lowers risk. Fuels dry out again quickly.

### Before a wildfire threatens your area...

- Clear leaves and other debris from gutters, eaves, porches and decks.
- Remove dead vegetation and other items from under your deck or porch.
- Remove flammable materials (firewood stacks, propane tanks) within 30 feet of your home's foundation and outbuildings, including garages and sheds. If it can catch fire, don't let it touch your house, deck or porch.
- Prune trees so the lowest branches are 12 to 15 feet from the ground.

### During the time a wildfire is in your area...



Home Ignition Zone

- Connect garden hoses and fill any pools, hot tubs, garbage cans, tubs, or other large containers with water. Firefighters have been known to use the hoses to put out fires on rooftops.
- Leave as early as possible. Promptly leaving your home and neighborhood clears roads for firefighters to get equipment in place to fight the fire, and helps ensure residents' safety.

Information adapted from [www.NFPA.org](http://www.NFPA.org)

### After a wildfire has been contained...

Fire increases the risk of flooding and mud flows downstream of the burned areas. Until vegetation can recover in these areas, little can be done to prevent excess water, debris, and mud flows. Knowing the risks to your property and taking preventative measures is the best course of action if you live downstream of a burned area.

### • Know your risk!

- 1) Be aware of the surrounding land and where potential flood waters would flow.
- 2) Survey your land for potential issues, such as clogged culverts and storm drains, and inspect the areas regularly.
- 3) Stay aware of changing weather conditions through local TV, radio, and the internet.



Entiat fire July 2014

### • Reduce your risk

- 1) Inspect, maintain, and clean out watercourses regularly.
- 2) Do not place debris, fences, or yard waste in a watercourse.
- 3) Do not build fences or other structures on or across watercourses.
- 4) Remove excess vegetation and control noxious weeds in watercourses.
- 5) Dispose of refuse in designated areas only.
- 6) Secure loose items around your property (large things that don't normally float will float in flash floods).

### • Create a Disaster Plan

- 1) Keep detailed lists of belongings and photos of your property to file with an insurance claim should you need to.
- 2) Keep all valuables in a safe and waterproof place.
- 3) Purchase insurance that covers flood damage.
- 4) Assemble a disaster kit containing first aid supplies, flashlights, extra batteries, enough food and water for 72 hours and necessary medications.
- 5) Have your family make an emergency evacuation plan that everyone understands and that you practice occasionally.

### • Tips for surviving a flood event

- 1) You may only have seconds to escape so be prepared to move quickly.
- 2) Stay on higher ground and away from watercourses and flood water.
- 3) Stay away from downed power lines.
- 4) Do not return home until it has been declared safe for reentry.

Information adapted from *Cascadia's Post-Fire Preparedness Brochure*. Contact Cascadia at (509) 436-1601 for your copy of the brochure.

Additional fire preparedness resources are available at [www.fireadapted.org](http://www.fireadapted.org).



## FAREWELLS AND BEST WISHES

### FAREWELL AMY!

Amy Hendershot, Regional Conservationist with the Natural Resources Conservation Service (NRCS) has accepted a new position with NRCS.

During her time in Chelan County, Amy worked on four main projects: pollinator conservation education; post-wildfire restoration and coordination on private lands in the Colockum and Wenatchee areas (rain gage installations, which result in cell phone flash-flood warnings and other infrastructure improvements to facilitate debris flows); on-farm conservation practices to promote more efficient agriculture (like high tunnels, irrigation improvements, pump replacements, etc.); and forest restoration activities on private lands (pre-commercial thinning, pruning, and slash treatment).

Amy worked collaboratively with Cascadia on many landowner assistance initiatives and was an important and valued partner in all of the projects Cascadia worked with NRCS to implement. Thank you Amy and best wishes for your future endeavors!



### FAREWELL JOSH!

AmeriCorps Member Josh Smith is moving on.

During his 10½ month term with Cascadia, Josh worked with staff on numerous projects, including: our Pollinator Garden, Picture the Wenatchee Photo Contest, Kids in the Creek, annual Native Plant Sale, riparian planting maintenance, and much more! He brought a level of dedication and insight to his work that we truly value. Thank you Josh and we wish you well on your future adventures!



**CASCADIA**  
CONSERVATION DISTRICT

14 N Mission St Wenatchee, WA 98801  
(509) 436-1601 • [www.cascadiacd.org](http://www.cascadiacd.org)

#### Board of Supervisors

Josh Koempel, *Chair*  
Hal Hawley, *Vice Chair*  
Roger Wristen, *Auditor*  
Frank Andrews, *Member*  
Junell Wentz, *Member*  
Jim Bartelme, *Associate*  
Larry Cordes, *Associate*  
Conard Petersen, *Associate*

#### Staff Members

Mark Amara, *Archaeologist*  
Mike Cushman, *Project Coordinator II*  
Kristine Desgroseillier, *Resource Specialist I*  
Peggy Entzel, *District Administrator*  
Valerie Hampton, *Administrative Assistant*  
Kurt Hosman, *Project Coordinator II*  
Kim Lancaster, *Archaeologist*  
Amanda Levesque, *Education & Outreach*  
Michael Rickel, *Program Manager*  
Jason Sims, *Resource Specialist II*  
Nada Wentz, *Office Assistant*

This newsletter is funded in part by grants from the Washington State Conservation Commission, the Washington State Department of Ecology and other public and private granting entities.



Please Remember to Recycle

## UPCOMING MEETINGS & EVENTS

### Cascadia Conservation District Board Meetings

August 21, 3:30 PM, Douglas Conference Room, 14 N Mission  
September 18, 3:30 PM, Douglas Conference Room, 14 N Mission  
October 16, 3:30 PM, Douglas Conference Room, 14 N Mission  
Please contact Cascadia's office for more information:  
(509) 436-1601

### Entiat Watershed Planning Unit (EWPU) meeting

October 1, Entiat Grange Hall, 9:00 AM

### Entiat Habitat Subcommittee Meeting

August 21, 215 Melody Lane, Wenatchee Room, 9 AM- 12 PM  
September 18, 215 Melody Lane, Wenatchee Room, 9 AM- 12 PM  
October 16, 215 Melody Lane, Wenatchee Room, 9 AM-12 PM

### Wenatchee River Institute

- Ghost Bears: In Search of the Elusive North Cascades Grizzly Bear—August 17-23 (co-sponsor North Cascades Institute)
- Large Carnivores of the North Cascades—August 18
- Sustainable Living and Farming Tour—September 13-14 (partnered with Simply Living Farm and Leavenworth Community Farmers Market)
- Shrubs of the Pacific Northwest (Red Barn Friday)—September 27, 7:00 PM, Barn Beach Preserve

More information visit [www.wenatcheeriverinstitute.org](http://www.wenatcheeriverinstitute.org) or call 509-548-9362.

### Cascadia Conservation District has launched a blog: Cascadia's Conservation Conversation!

Please check it out at:

<http://ccdconservationconversation.blogspot.com/>



### Native Plants of Central Washington for Restoration and Landscaping

- Over 120 species, including trees, shrubs, wildflowers and grasses
- Nursery is open March–November

## Derby Canyon Natives

Peshastin, WA Tel: (509) 548-9404 [www.derbycannyonnatives.com](http://www.derbycannyonnatives.com)

## DEEPROOTS Landscaping & Nursery, Inc.

(509) 679-0154 • [www.deeprootslandscapes.com](http://www.deeprootslandscapes.com)

- Landscape design & installation specialists.
- Growers of native plants including landscape ready trees, shrubs & perennials.

Nursery open by appointment only. Call us today!