

# CONSERVATION QUARTERLY

FALL 2012

## LEAVING A LEGACY OF RESTORATION IN THE ENTIAT RIVER VALLEY

Over a century ago, when C.E. "Ed" Hedding proved his land claim 20 miles up the Entiat River, he probably never imagined that the legacy he was leaving his family, many of whom still live in the valley today, would someday include a fish restoration project aimed at improving salmon runs to levels not seen since his early days in the valley.



Photo courtesy of Bureau of Reclamation

Newly excavated side channel

Three of these types of restoration projects have been constructed in the Brief area this summer and fall. The purpose of these projects is to help bring enough fish back to the Entiat that the spring Chinook, steelhead and bull trout are taken off the threatened and endangered species lists.



Photo courtesy of Bureau of Reclamation

Young cottonwood felled by beaver into new side channel

Restoring a healthy fish run to the river has the potential to open all of the river to fishing, and owners could once again "fish out their back door." A longer fishing season also has the potential to bring more visitors to the valley who would be likely to support local businesses.

A major component of each of the three projects has been the

reintroduction of large wood into and along the river banks.

These structures will: provide a place for juvenile fish to hide, support their food sources, and also give returning spawners a place to rest on their journey upstream. Other elements of the projects include the breaching and removal of levees and the excavation of side channels, all of which will allow the river to move more naturally.



Photo courtesy of Bureau of Reclamation

Logs installed in new side channel

Many agencies and organizations, from non-profits and non-governmental organizations to the county, state and federal governments, are working together to bring the fish back to the Entiat River. All of the efforts, however,

wouldn't be successful without people like the descendants of Ed Hedding who are leaving a legacy of their own to their future generations.

A project tour, which will be open to the public, is scheduled for Friday, November 2. Please contact Susan Dretke at (509) 664-9348 or via email at [susan.dretke@wa.nacdn.net](mailto:susan.dretke@wa.nacdn.net) for more details.

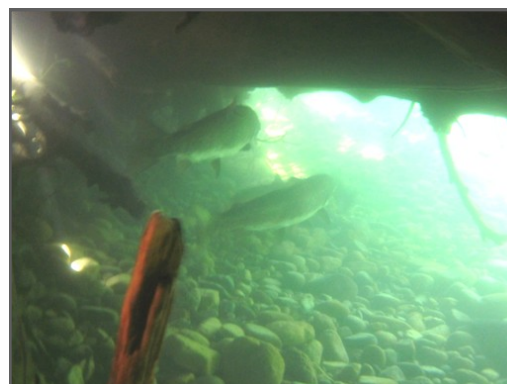


Photo courtesy of USFWS

Adult taking refuge in new wood structures

POSTAL CUSTOMER

Non-Profit Org.  
US  
POSTAGE  
PAID  
PERMIT # 40  
Wenatchee,

# 2013 NATIVE PLANT SALE



See page 2 for more information and an order form.



# ANNUAL NATIVE PLANT SALE

Cascadia Conservation District is now accepting orders for our annual native plant sale. This year we will be offering 10 different plant species suitable for a variety of planting projects. Many of the plants are also considered fire-resistant and make excellent choices for your FireWise landscape.

The plants are available as bare-root stock, meaning they do not come in pots or burlap bags. They are harvested from the field in winter when the plants are dormant and arrive ready to be replanted in your landscape.

The plants are sold in bundles of 10 stems with the exception of Ponderosa pine. The Ponderosa pine are offered in either bundles of 25 stems or bags of 200 stems. An order form is included below.

A color brochure with photos and information on each of the plant species offered is available on our website at [www.cascadiacd.org](http://www.cascadiacd.org) or by calling our office at (509) 664-9370. **All orders must be received by February 15, 2013.**

Plants are sold on a first-come, first-served basis and quantities are limited. A minimum 50% deposit is required to hold your order. Fully

prepaid orders are appreciated. We are sorry, but we are unable to accept credit cards at this time.

Plants will be distributed at the Stemilt Growers Warehouse in north Wenatchee on Saturday, April 6, 2013 from 10am-1pm. A map to the pick-up site will be sent to you along with a reminder as the pick-up date approaches. Please be aware that any unclaimed plants will be considered abandoned and used for conservation projects. There are *no* refunds for plant orders not picked up.

Please refer to our website, [www.cascadiacd.org](http://www.cascadiacd.org), for a list of commonly asked questions related to the plant sale. Inquiries should be directed to Jonathan Stutler, AmeriCorps Member, at (509) 664-9370.

In addition to the plant sale, Cascadia Conservation District is sponsoring a free workshop titled **"Native Planting 101"**. This workshop will cover a wide variety of topics including restoration, yardscaping and creating pollinator habitat with native plants, as well as everything you ever wanted to know about weed identification and management.

The "Native Planting 101" workshop will be held

on **Saturday, February 2, from 12:00-4:30pm**, at the Confluence Technology Center in Wenatchee, WA. Space is limited so reserve your seat today.

**For more information or to RSVP contact our office at (509) 664-9370 or visit our website at [www.cascadiacd.org](http://www.cascadiacd.org).**

## STOCK TYPES

**1-0 Bareroot**– Grown in seedbed for one year. They represent the smallest stock type and are easiest to plant correctly, but plan for some weed control.

**2-0 Bareroot**– Grown two years in seedbed. They are bigger and better able to compete with surrounding vegetation and can withstand light to moderate browsing by wildlife.

**Live Stake**– Cuttings from shrubs and/or small trees that when harvested and installed correctly during dormancy will develop roots and grow.

**Plug**– Container grown in a greenhouse for one year. Roots still encapsulated in soil. Similar to 1-0 stock in terms of planting ease, competition with surrounding vegetation, and susceptibility to browsing by wildlife.



## Cascadia Conservation District 2013 Native Plant Sale

Name: \_\_\_\_\_  
Address: \_\_\_\_\_  
City: \_\_\_\_\_ State: \_\_\_\_\_ Zip Code: \_\_\_\_\_  
Phone Number: \_\_\_\_\_  
Email Address: \_\_\_\_\_

Plant	Stock	Height	Sold As	# Bundles	Price/Bundle	Order
<b>Conifers:</b>						
Ponderosa Pine	2-0	12"+	200 per bag	_____	x \$120.00 each	= _____
Ponderosa Pine	2-0	12"+	25 per bundle	_____	x \$30.00 each	= _____
<b>Deciduous Trees:</b>						
Quaking Aspen	2-0	18"+	10 per bundle	_____	x \$15.50 each	= _____
Rocky Mountain Maple	1-0	12"+	10 per bundle	_____	x \$15.50 each	= _____
<b>Shrubs:</b>						
Blue Elderberry	1-0	12"+	10 per bundle	_____	x \$14.00 each	= _____
Mock Orange	2-0	12"+	10 per bundle	_____	x \$15.50 each	= _____
Serviceberry	1-0	12"+	10 per bundle	_____	x \$15.00 each	= _____
Snowberry	1-0	12"+	10 per bundle	_____	x \$14.50 each	= _____
Woods Rose	1-0	12"+	10 per bundle	_____	x \$15.00 each	= _____
Red Osier Dogwood	stake	36"	10 per bundle	_____	x \$14.00 each	= _____
<b>Ground Cover:</b>						
Kinnikinnick	plug	3-6"	10 per bundle	_____	x \$35.00 each	= _____

**\*Minimum 50% deposit is required to guarantee order.\***

We do not accept credit cards at this time.  
Sorry for any inconvenience.

Add 8.1% WA State Sales Tax

Subtotal = \_\_\_\_\_

Total = \_\_\_\_\_

## Ordering Instructions

- Complete order form.
- Mark your calendar for pick-up day on April 6, 2013 10am-1pm  
  
Plant distribution will take place at the Stemilt Growers Warehouse in north Wenatchee.  
  
A map to the pick-up site will be mailed to you with your receipt.
- By February 15, please bring in or mail your order form with payment to:

Cascadia Conservation District  
215 Melody Lane  
Wenatchee, WA 98801

**Questions?**  
(509) 664-9370

**Thanks for supporting your local conservation district!**

For office use only: receipt # \_\_\_\_\_ paid \_\_\_\_\_ outstanding balance \_\_\_\_\_



## KIDS IN THE CREEK LAUNCHES WEBSITE

The popular *Kids in the Creek* outdoor education program has reached another milestone. On October 30, a new website was launched to house the curriculum materials and some exciting new resources. Congratulations to the core team members on this latest achievement in a very successful year!

*Kids in the Creek* is a hands-on program for high school students designed to illustrate the importance of the entire watershed. It allows them to experience the practical application of scientific methodology through a series of stations where they collect and analyze data. Students gain knowledge and understanding of the positive and negative outcomes to water system health that can result from human actions and natural events.

In a continued effort to keep the program up-to-date and relevant, a Fish Health activity was introduced in 2009 and has now been refined for inclusion in the curriculum. Earlier this year, a new tool was developed for resource professionals who want to assist with the field day. Seven training videos were filmed, including an introduction to the program with an overview of the culminating activity and individual segment for each of the six stations. The videos, along with scripts and equipment checklists, are housed on the new website, [www.kidsinthecreek.com](http://www.kidsinthecreek.com)

*“To connect students with aquatic and riparian ecosystems for an understanding of watersheds and the critical role of human land management activities.”*  
– *Kids in the Creek Mission Statement.*

A companion program, *Adults in the Creek*, has also been tested and implemented. This program is designed to provide adults a hands-on, experiential glimpse into the unique *Kids in the Creek* field day. It is now mandatory for teachers who want to bring their class to *Kids in the Creek*, to ensure both educator and student success. Teachers gain an understanding of how to prepare students for the program, and receive continuing education credit for their participation. Attendance is also open to volunteers, future activity assistants, administrators, and parents.



The success of *Kids in the Creek* can be attributed to an award-winning curriculum, motivated educators, enthusiastic volunteers, and the multi-agency partnerships that have nurtured the program since 1992. Core team partners include Cascadia Conservation District, US Fish and Wildlife Service, US Forest Service, Department of Ecology, and City of Wenatchee. Many other entities and private citizens have contributed over the years. With the introduction of the website, even more collaboration and a wealth of educational opportunities are on the horizon.

## PICTURE THE WENATCHEE : WATERSHED PHOTO CONTEST RESULTS

Judging the contest proved difficult with 170 wonderful entries from 32 talented photographers. However, two winning photos were chosen from each category for inclusion in the 2013 Picture the Wenatchee Watershed Stewardship Calendar.

Six local businesses participated as “photo galleries” and hosted contest entries from October 8-19. A big thanks to our galleries: Anjou Bakery, Der Man Shoppe, Icicle Brewing Company, Leavenworth Mountain Sports, Lemongrass Natural Foods, and Mountain Springs Lodge.

We would also like to thank our three local judges: Lisa Pelly (Trout Unlimited-Washington Water Project), Doug Pendleton (Ponderosa Community Watershed Committee), and Nancy Warner (Initiative for Rural Innovation and Stewardship) for choosing our “Best in Show” photos. The results of the Best in Show vote will be featured in the December issue of The Good Life magazine. The November 16 edition of the Wenatchee World will also highlight some of the winning photos. Stay tuned!

The 2013 watershed calendar featuring the winning photos is set to come out in early December. Contact Cascadia Conservation District at (509) 664-9370 for additional information and to order yours!

**Thank you to all the wonderful photographers who made our 2012 photo contest a huge success!**

## FIRE REHAB EFFORTS

Various agencies have been working together since the fires broke out to evaluate potential threats to cities and communities adjacent to and downstream of burned areas. In areas that were exposed to intense heat, the soil does not absorb as much rain water as lightly burned or healthy areas. This causes water, which would normally infiltrate into the soil, to bead-up and run off in increased volumes. The excess runoff and water volume can increase the risk of floods and sediment, which would flow into streams, rivers, and storm drains, and can clog culverts, affect fish health, and even damage roads. It is possible to reduce the impacts of these potential threats with proper planning.



Photo courtesy of Andy Dappen, Wenatchee Outdoors

Sage Hills Trail Burn

### A few things you can do to help:

- Secure any loose items around your property, including yard furniture, pool covers, tarps, and agricultural tools and equipment.
- Clean your property’s culverts and storm drains of dirt, fill, trash, and flood debris.
- If you have a storm drain on your property, please inspect it regularly to determine if any changes have occurred that require maintenance to the ditch or pipe. The best time is after a rainfall.

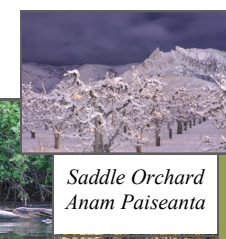
### In the event of a flood, it’s important to keep in mind:

- Evacuations may be necessary and you may only have seconds to escape. Act quickly.
- Move to higher ground away from rivers, creeks and storm drains.
- Do not drive or walk through flooded waters.
- Stay away from downed power lines and electrical wires.
- Watch out for lost pets and displaced wild animals.

Be sure to monitor the weather forecast to stay alert and prepare a family disaster plan to help you be ready in case of a flood or mud flow. Visit [http://www.co.chelan.wa.us/pw/after\\_the\\_fires.html](http://www.co.chelan.wa.us/pw/after_the_fires.html) for additional information and resources including what is covered during the “After the Fires” workshops.



Young Moose  
Pam Miltenberger



Saddle Orchard  
Anam Paiseanta



Fall Spectacle  
Judy Jacques

### Congratulations to the following winners:

#### Agriculture:

“Saddle Orchard” by Anam Paiseanta  
“Pear Blossoms” by Bob Burrows

#### Landscape:

“Saddle Rock Stars” by Anam Paiseanta  
“Fall Spectacle” by Judy Jacques

#### Plants:

“New Beginnings” by Mark Tucker  
“Columbia Lily” by Terry Lillybridge

#### Recreation:

“Mission Peak Snowshoe” by Drew Gaylord  
“Hiking Homestead Trail” by Diane Ottosen

#### Water:

“Minotar Lake” by Airan Mendoza  
“Flowing Life” by Mark Tucker

#### Wildlife:

“Fawn” by Pete Freund  
“Young Moose at Fish Lake” by Pam Miltenberger



Columbia Lily  
Terry Lillybridge



Pear Blossoms  
Bob Burrows



## WE NEED YOU...

...TO JOIN OUR BOARD OF SUPERVISORS...

Cascadia Conservation District is self-governed by a Board of Supervisors who work to establish priorities, set policy and direct the work of Cascadia staff. Registered voters residing within the Cascadia Conservation District boundary\* who are interested in guiding conservation efforts in Chelan County are encouraged to run for office. Board members are unpaid volunteers who serve a three-year term and must be available to attend monthly meetings.

### To announce your candidacy:

1. Obtain an information form and nominating petition by calling our office: (509) 664-9370 or visiting our website: [www.cascadiacd.org](http://www.cascadiacd.org).
2. Collect signatures from at least 25 registered voters in the District.
3. Submit completed information form by **December 14, 2012**. Include the nominating petition to get your name printed on the ballot.

\*The Cascadia Conservation District boundary currently includes all of Chelan County except for the incorporated cities of Wenatchee and Chelan.

...AND TO VOTE!

If you don't have the time to serve on the Board, then make your voice heard by voting for your preferred candidate.

Registered voters within the District boundary are eligible to vote. The election will be held during the annual Pear Day conference on **January 23, 2013** in the lobby of the Wenatchee Convention Center from 8:30 am to 3 pm.

For questions regarding the election please call Valerie at (509) 664-9310.

## WELCOME ABOARD!

Cascadia is pleased to welcome our newest AmeriCorps intern, Jonathan Stutler.

Jonathan graduated from the University of Montevallo with a Bachelors degree in Art and a minor in Art History.

During his ten and a half month term with Cascadia, Jonathan is determined to explore as much of the Pacific Northwest as possible. He has already hiked and camped around Mt. Rainier, Mt. Baker, Hoh Rainforest in the Olympics, and Icicle Creek near Leavenworth.



## UPCOMING MEETINGS & EVENTS

### Cascadia Conservation District Board Meetings

November 15 3:30 pm at 215 Melody Lane, Wenatchee

December 20 3:30 pm at 215 Melody Lane, Wenatchee

Please Contact Cascadia's office for more information: (509) 664-9370.

### Entiat Habitat Subcommittee Meetings

November 15 8:30 am at 215 Melody Lane, Wenatchee

December 5 8:30 am at 215 Melody Lane, Wenatchee

January 17 8:30 am at 215 melody Lane, Wenatchee

### Entiat Watershed Planning Unit Meetings

January 9, 2013 9:00 am at Grange Hall, Entiat

### Upper Columbia Salmon Recovery Board Meetings

December 13 10:00 am at the Chelan County Commissioners Hearing Room, Wenatchee

### UCSRB Implementation Team Meetings

December 6 10:00 am at the Chelan County PUD Auditorium, Wenatchee

### UCSRB Regional Technical Team Meetings

November 14 9:00 am at the WA State Parks & Recreation Commission Building, East Wenatchee

December 12 9:00 am at the WA State Parks & Recreation Commission Building, East Wenatchee

### Winter Life Snowshoe Tours

Explore the Icicle Trail at Leavenworth National Fish Hatchery on snowshoes. Friends of Northwest Hatcheries is sponsoring free guided snowshoe tours starting Saturday, January 4, 2013. Tours will be available by reservation only. To register visit <http://www.friendsofnwhatcheries.com/event-registration/> Registration opens December 3, 2012.

### Wenatchee and Entiat Watershed Projects Tour

November 2, contact Susan Dretke at (509) 664-9348 for more information.

For additional information on any of the meetings and events above please contact Cascadia at (509) 664-9370 or [www.cascadiacd.org](http://www.cascadiacd.org).

**Cascadia Conservation District has launched a blog:  
Cascadia's Conservation Conversation!**

Please check it out at: <http://ccdconservationconversation.blogspot.com/>



**CASCADIA**  
CONSERVATION DISTRICT

215 Melody Lane Wenatchee, WA 98801  
(509) 664-9370 • [www.cascadiacd.org](http://www.cascadiacd.org)

### Board of Supervisors

Josh Koempel, *Chair*  
Hal Hawley, *Vice Chair*  
Roger Wristen, *Auditor*  
Frank Andrews, *Member*  
Jim Bartelme, *Member*  
Larry Cordes, *Associate*  
Conard Petersen, *Associate*  
Junell Wentz, *Associate*

### Staff Members

Mark Amara, *Archaeologist*  
Mike Cushman, *Project Coordinator II*  
Susan Dretke, *Resource Specialist II*  
Peggy Entzel, *District Administrator*  
Valerie Hampton, *Administrative Assistant*  
Kurt Hosman, *Project Coordinator*  
Kate Koenig, *Resource Specialist*  
Kim Lancaster, *Archaeologist*  
Amanda Levesque, *Education & Outreach*  
Jenni Novak, *Resource Specialist*  
Phylisha Olin, *Project Coordinator*  
Michael Rickel, *Program Manager*  
Jonathan Stutler, *AmeriCorps Intern*  
Nada Wentz, *Office Assistant*

This newsletter is funded in part by grants from the Washington State Conservation Commission, the Washington State Department of Ecology and other public and private granting entities.



Please Remember to Recycle



**Native Plants of Central Washington**  
for  
**Restoration and Landscaping**

- Over 120 species, including trees, shrubs, wildflowers and grasses
- Nursery is open March–November

**Derby Canyon Natives**

Peshastin, WA Tel: (509)548-9404 [www.derbycannyonnatives.com](http://www.derbycannyonnatives.com)

**DEEPROOTS**  
Landscaping & Nursery, Inc.

(509) 679-0154 • [www.deeprootslandscapes.com](http://www.deeprootslandscapes.com)

- Landscape design & installation specialists.
- Growers of native plants including landscape ready trees, shrubs & perennials.

**Nursery open by appointment only. Call us today!**